



— NEXT GenWorks —
Defining tomorrow, *today.*

AUTO Chem Xpert

Fully Automated Chemistry Analyser



Quality and Relevant technology is the key to
Expanding Access and Affordable care


When it comes to Biochemistry analyser The choice
today is high-cost high throughput automated
biochemistry analyser or highly manual and
compromised semi auto analysers



GenWorks a leader in healthcare technology is proud to launch the first automated random access clinical chemistry analyser – **AUTO Chem Xpert** The best choice for a mid-sized clinical laboratory with **features never seen before** and with world class Autochem system pack reagents

Equipped with **best-in-class technology** with the combination of best-in-class reagents

Quality of reagents play a very important role in the **quality of results**



A wide menu of reagents provided in a system pack format with barcode for **ease of use**



KEY FEATURES



Best in class Technology

- ▶ Compact and user-friendly
- ▶ Constant throughput of 150 tests/hour with double reagents
- ▶ Minimum Reaction Volume as low as 150 μ L, saves cost
- ▶ 40 Reagent and 40 Sample Positions with In-built Barcode Reader
- ▶ Integrated and fully closed optical system, multi wavelengths simultaneous detection
- ▶ New amorphous optical plastic reaction cuvettes, perfect transmittance
- ▶ Maintenance Free semiconductor solid state refrigeration
- ▶ Non-stop cooling system with peltier pad inside
- ▶ Horizontal moving sampling and mixing arm, better efficiency
- ▶ Multi-stage On-board laundry system
- ▶ Low water consumption



Best in class Reagents

- ▶ Compact Liquid stable system pack reagents which are CE certified
- ▶ Imported from world class global brands like Dialab
- ▶ Repacked in a facility compliant to ISO 13485:2016 & ISO 14971:2019 standards under strict cGMP guidelines
- ▶ A wide menu of tests with equal number of R1 & R2 bottles for double reagents
- ▶ Barcoded & Dedicated High Quality Reagents
- ▶ Long Onboard & calibration stability
- ▶ No Manual Pouring, No Reagent Wastage



Reagent & Sample Disk

- ▶ In-built Barcode Reader
- ▶ 40 Reagent positions
- ▶ 40 Sample positions where sample cups and Primary tubes can be used
- ▶ Non-stop cooling system with peltier pad inside
- ▶ Maintenance free semiconductor solid state refrigeration, eliminate contamination
- ▶ Separate switch for Cooling system, 24 hours 2°C – 14°C



Reaction Disk

- ▶ 44 Individual reaction cuvettes
- ▶ New amorphous optical plastic reaction cuvettes
- ▶ Reaction volume as low as 150 μL which saving costs
- ▶ Stable & accurate temperature ($37 \pm 0.1^\circ\text{C}$) for reaction
- ▶ Multi-stage (2x4 Stage) on board laundry system, automatic cleaning and drying of cuvettes
- ▶ Low water consumption



Multifunctional precision sampling probe

- ▶ External and internal mirror polish
- ▶ External and internal probe washing
- ▶ Dedicated sampling probe equipped with sensitive liquid sensor
- ▶ Timely feedback of reagent and sample residuals
- ▶ Collision protection
- ▶ Automatic probe depth adjustment





High precision ceramic syringe

- ▶ Permanent ceramic piston
- ▶ Accurate dispensing as low as 0.1 μL



Excellent mixer design

- ▶ Teflon coated and paddle type mixer
- ▶ No water dripping which eliminates carry over
- ▶ Excellent mixing effect with standard mixing procedure

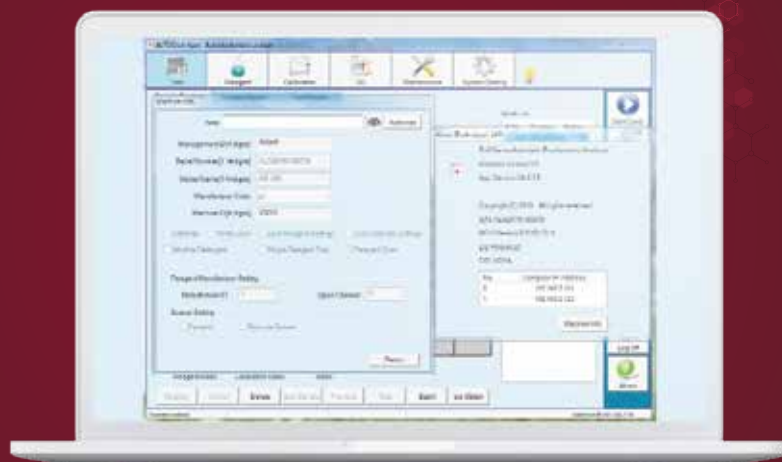


Optical system

- ▶ Integrated and fully closed with 8 wavelengths
- ▶ Absorbance range - upto 4 Abs.

Advanced operating system

- ▶ Windows-based user-friendly software interface simple, easy to operate
- ▶ Automatic Sample dilution
- ▶ Automatic reaction and calibration result checking and warning with alarm log
- ▶ Linear & non-linear calibration
- ▶ Multi-points calibration – upto 8 points
- ▶ Quality control feature using Westgard, L-T plot and cumulative principles



AUTO Chem Xpert

AUTOCHEM Xpert REAGENT PACK

Dedicated System pack Reagents for New Autochem Xpert



Cat. No.	Product, Method	Method	Pack Size	Content
AB7140	Albumin	BCG	4x35 ml	Single Reagent
AP7160	Alkaline Phosphatase	mod.IFCC	4x40 ml	4x32 mlR1, 4x8 mlR2
AY7030	Alpha Amylase	CNP-G3	2x15 ml	Single Reagent
BD7160	Bilirubin Auto Direct	DCA	4x40 ml	4x32 mlR1, 4x8 mlR2
BT7160	Bilirubin Auto Total	DCA	4x40 ml	4x32 mlR1, 4x8 mlR2
CA7140	Calcium	Arsenazo	4x35 ml	Single Reagent
BC7140	Carbon Dioxide(CO2)	PEP-C	4x35 ml	Single Reagent
HD7080	Cholesterol HDL	Direct	2x40 ml	2x30 mlR1, 2x10 mlR2
LD7040	Cholesterol LDL	Direct	1x40 ml	1x30 mlR1, 1x10 mlR3
CH7140	Cholesterol	CHOD-PAP	4x35 ml	Single Reagent
CK7030	CK-MB	DGKC	2x15 ml	2x12 mlR1, 2x3 mlR2
CN7030	CK-NAC	DGKC	2x15 ml	2x12 mlR1, 2x3 mlR3
CE7160	Creatinine	Enzymatic	4x40 ml	4x30 mlR1, 4x10 mlR2
CR7160	Creatinine	mod.Jaffe	4x40 ml	4x32 mlR1, 4x8 mlR2
GT7080	Gamma GT	IFCC	2x40 ml	2x30 mlR1, 2x10 mlR2
GL7140	Glucose	GOD-PAP	4x35 ml	Single Reagent
AS7160	GOT(AST)	mod.IFCC	4x40 ml	4x32 mlR1, 4x8 mlR2
AL7160	GPT(ALT)	mod.IFCC	4x40 ml	4x32 mlR1, 4x8 mlR2
HB7040	HbA1c Direct	Latex immunoturbid	1x40 ml	1x30 mlR1, 1x10 mlR2
IR7030	Iron	Ferene	2x15 ml	2x12 mlR1, 2x3 mlR1
LH7030	LDH	L-P	2x15 ml	2x12 mlR1, 2x3 mlR2
LI7030	Lipase	Enzymatic Colorimetric	2x15 ml	2x12 mlR1, 2x3 mlR3
PH7140	Phosphorus Inorganic	Molybd.	4x35 ml	Single Reagent
UP7070	Protein Total in Urine with 1ml Std.	Pyrogallol Red	2x35 ml	Single Reagent
TP7140	Protein Total	Biuret	4x35 ml	Single Reagent
TG7140	Triglycerides	GPO-PAP	4x35 ml	Single Reagent
UI7030	UIBC	Ferene	2x15 ml	2x12 mlR1, 2x3 mlR1
UR7160	Urea UV Auto	Urease/GLDH	4x40 ml	4x32 mlR1, 4x8 mlR2
UA7160	Uric Acid TBHBA	Enzym.Color.	4x40 ml	4x32 mlR1, 4x8 mlR2
ASO7040	ASO with 1ml Cal.	Immunoturbidimetric	1x40 ml	1x30 mlR1, 1x10 mlR2
CRP7040	CRP with 1ml Cal.	Immunoturbidimetric	1x40 ml	1x30 mlR1, 1x10 mlR2
RF7040	RF with 1ml Cal.	Immunoturbidimetric	1x40 ml	1x30 mlR1, 1x10 mlR2
MAL7040	Microalbumin with 1ml Cal.	Immunoturbidimetric	1x40 ml	1x30 mlR1, 1x10 mlR2

Technical specifications

General information

- ▶ Machine type Fully automated, random access, barcoded reagents
- ▶ Test speed Constant 150 tests/hour (Mono reagent or double reagent)
- ▶ Test principle Colorimetric method, turbidimetry
- ▶ Test method 1 point end, 2 point end, Fixed-Time, Kinetics
- ▶ Calibration type Linear & nonlinear

Sample unit

- ▶ Sample tray 40 sample positions
- ▶ Sample tube Micro cup & test tube & blood collection tube can be used. (<D 12 -13)mm * (25-100)mm
- ▶ Sample volume 2-30 μ L, step by 0.1 μ L
- ▶ Sample probe Liquid surface detection, timely tracking for liquid volume, Collision avoidance
- ▶ Sample barcode Sample barcode reader

Reagent unit

- ▶ Reagent tray 40 reagent positions, Non-stop cooling system with peltier pad inside, 24 hours 2°C-14°C
- ▶ Reagent volume 20-300 μ l, step by 1 μ l
- ▶ Reagent needle Liquid surface detection, timely tracking for liquid volume. Collision avoidance
- ▶ Reagent barcode Reagent barcode reader

Reaction unit

- ▶ Reaction tray 44 reaction cuvettes, new amorphous optical plastics reaction cups, perfect transmittance
- ▶ Reaction volume 150 μ l-330 μ l
- ▶ Reaction time 10 minutes
- ▶ Temperature Peltier pad incubation system, reaction temperature (37°C \pm 0.1 °C)

Washing Unit

- ▶ Onboard Laundry Multi-stage (2x4 Stage) on board laundry system, automatic cleaning and drying of cuvettes

Mixing system

- ▶ Mixer paddle-type mixing, effective reducing of carry-over

Optical system

- ▶ Light source Halogen lamp
- ▶ Wavelength 340nm; 405nm; 450nm; 505nm; 546nm; 578nm; 630nm; 700nm(4 more options)
- ▶ Absorbance range 0-4.0 Abs
- ▶ Resolution 0.0001 Abs

Operating system

- ▶ Operation system Windows XP, Windows 7, Windows 8, Windows 10
- ▶ Data processing Automatic calibration, test combination, effective time management of reagents, serum index, whole process detection, linear expansion of enzyme, blank deduction, dirty cuvette memory , cross infection prevention, patient information memory and association input, automatic report audit, data fuzzy query, report statistics and printing, referencerange grading, alarm information classification, user operation privilege classification management.
- ▶ Data processing 6 formats optional, support custom pattern
- ▶ interface TCP/IP network interface

Working conditions

- ▶ Power supply AC 110/220V \pm 10%, 50/60 Hz, 650W
- ▶ Waterconsumption 6L/hour(maximum)
- ▶ Dimension 750mm * 475mm * 535mm(L *W*H)
- ▶ Weight 80kg



In conclusion
A compact and fully automated clinical chemistry analyzer
which is:

VERY CONVENIENT
TO USE

COST-EFFECTIVE

GIVES RELIABLE AND
ACCURATE RESULTS FOR
A WIDE MENU OF ASSAYS



— NEXT GenWorks —
Defining tomorrow, *today.*

AUTO Chem Xpert



comes with

- ▶ High quality world class Dialab and AutoChem System packs
- ▶ Flexible Pricing and Finance options
- ▶ Free maintenance subject to meeting consumption commitments
- ▶ Available only on store.genworkshealth.com

Call us at +91 6364-938800
to know more or visit us at
www.genworkshealth.com

GenWorks Health Private Limited,
Gamma Block, Sigma Soft Tech Park,
Unit 522-524, 5th Floor,
Bengaluru, Karnataka 560066